

DEPARTMENT OF THE ARMY TECHNICAL MANUAL

ORGANIZATIONAL MAINTENANCE REPAIR PARTS

AND SPECIAL TOOLS LISTS

SPEECH AMPLIFIERS BC-614-E,

BC-614-H, AND BC-614-I

FSN 5820-164-7288

Headquarters, Department of the Army, Washington, D.C.

8 March 1974

Current as of July 1973

	Paragraph	Page
Section I. INTRODUCTION		
Scope	1-1	2
General	1-2	2
Explanation of columns	1-3	2
Special information	1-4	4
Location of repair parts	1-5	4
Abbreviations (Not applicable)	1-6	5
Reporting of equipment publication improvements	1-7	5
II. PRESCRIBED LOAD ALLOWANCE (Not applicable)		
III. REPAIR PARTS LIST.....		6
IV. SPECIAL TOOLS, TEST AND SUPPORT EQUIPMENT (Not applicable)		
V. INDEX-FEDERAL STOCK NUMBER AND REFERENCE NUMBER CROSS-REFERENCE TO FIGURE AND ITEM NUMBER.....		7

*This manual supersedes TM 11-5820-430-20P, 15 May 1962.

SECTION I
INTRODUCTION

1-1. Scope

This manual lists repair parts and special tools required for the performance of organizational maintenance of the BC-614-E, BC-614-H, and BC-614-I. The PCCN for the equipment is GCRAFS for all models.

1-2. General

This repair parts and special tools list is divided into the following sections:

a. *Prescribed Load Allowance (PLA)* - Section II. Not applicable.

b. *Repair Parts List* - Section III. A list of repair parts authorized for the performance of maintenance at the organizational level. This repair parts list is arranged in alphabetical order.

c. *Special Tools, Test and Support Equipment* - Section IV. Not applicable.

d. *Index-Federal Stock Number and Reference Number Cross-Reference to Figure and Item Number* - Section V. A list, in ascending numerical sequence, of all Federal stock number appearing in the listings, followed by a list, in alphameric sequence, of all reference numbers appearing in the listings. Federal stock number and reference numbers are cross-referenced to each illustration figure and item number or reference designation appearance.

1-3. Explanation of Columns

The following provides an explanation of columns in the tabular lists:

a. *Source, Maintenance, and Recoverability Codes (SMR)*.

(1) Source code. Indicates the manner of acquiring support items for maintenance, repair, or overhaul of end items. Source codes are -

<i>Code</i>	<i>Explanation</i>
PA-	Item procured and stocked for anticipated or known usage.
PB-	Item procured and stocked for insurance purposes because essentiality dictates that a minimum quantity be available in the supply systems.
PC-	Item procured and stocked and which otherwise would be coded PA except that it is deteriorative in nature.

Code

Explanation

PD-	Support item, excluding support equipment, procured for initial issue or outfitting and stocked only for subsequent or additional initial issues or outfittings. Not subject to automatic replenishment.
PE-	Support equipment procured and stocked for initial issue or outfitting to specified maintenance repair activities.
PF-	Support equipment which will not be stocked but which will be centrally procured on demand.
PG-	Item procured and stocked to provide for sustained support for the life of the equipment. It is applied to an item peculiar to the equipment which because of probable discontinuance or shutdown of production facilities would prove uneconomical to reproduce at a later time.
KD-	An item of depot overhaul/repair kit and not purchased separately. Depot kit defined as a kit that provides items required at the time of overhaul or repair.
KF-	An item of a maintenance kit and not purchased separately. Maintenance kit defined as a kit that provides an item that can be replaced at organizational or direct support or general support levels of maintenance.
KB-	Item included in both a depot overhaul/repair kit and a maintenance kit.
MC-	Item to be manufactured or fabricated at organizational level.
MF-	Item to be manufactured or fabricated at direct support maintenance level.
MH-	Item to be manufactured or fabricated at general support maintenance level.
MD-	Item to be manufactured or fabricated at depot maintenance level.
AO-	Item to be assembled organizational level.
AF-	Item to be assembled at direct support maintenance level.

<i>Code</i>	<i>Explanation</i>
AH-	Item to be assembled at general support maintenance level.
AD-	Item to be assembled at depot maintenance level.
XA-	Item is not procured or stocked because the requirements for the item will result in the replacement of the next higher assembly.
XB-	Item is not procured or stocked. If not available through salvage, requisition.
XC-	Installation drawing, diagram instruction sheet, field service drawing, that is identified by manufacturers' part number.
XD-	Support items can be requisitioned with justification.

NOTE

Cannibalization or salvage may be used as a source of supply for any items source coded above except those coded XA and aircraft support items as restricted by AR 700-42.

(2) *Maintenance code*. Maintenance codes are assigned to indicate the levels of maintenance authorized to USE and REPAIR support items. The maintenance codes are entered in the third and fourth positions of the Uniform SMR Code Format as follows:

(a) *Use (third position)*. The maintenance code entered in the third position indicates the lowest maintenance level authorized to remove, replace, and use the support item. The maintenance code entered in the third position indicates one of the following levels of maintenance.

<i>Code</i>	<i>Application/Explanation</i>
O -	Support item is removed, replaced, used at the organizational level of maintenance.

NOTE

A code "C" may be used in this position to denote crew or operator maintenance performed within organizational maintenance.

F -	Support item is removed, replaced, used at the direct support maintenance level.
-----	--

<i>Code</i>	<i>Application/Explanation</i>
H -	Support item is removed, replaced, used at the general support maintenance.
D -	Support items that are removed, replaced, used at depot only.

(b) *Repair (fourth position)*. The maintenance code entered in the fourth position indicates whether the item is to be repaired and identifies the lowest maintenance level with the capability to perform complete repair (i.e., all authorized maintenance functions). When a maintenance code is not used a dash (-) sign is entered. For multiservice equipment/systems or when a code is entered, this position will contain one of the following maintenance codes as assigned by the service(s) that require the code:

<i>Code</i>	<i>Application/Explanation</i>
O -	The lowest maintenance level capable of complete repair of the support item is the organizational level.
F -	The lowest maintenance level capable of complete repair of the support item is direct support.
H -	The lowest maintenance level capable of complete repair of the support item is general support.
D -	The lowest maintenance level capable of complete repair of the support item is the depot level.
L -	Repair restricted to designated Specialized Repair Activity.
Z -	Nonrepairable. No repair is authorized.
B -	No repair is authorized. The item may be reconditioned by adjusting, lubricating, etc., at the user level. No parts or special tools are procured for the maintenance of this item.

(3) *Recoverability code*. Recoverability codes are assigned to support items to indicate the disposition action on unserviceable items. The recoverability code is entered in the fifth position of the uniform SMR Code Format as follows:

<i>Code</i>	<i>Explanation</i>
Z -	Nonrepairable item. When unserviceable, condemn and dispose at the level indicated in the first digit of the maintenance code.
O -	Repairable item. When uneconomically repairable, condemn and dispose at organizational level.

<i>Code</i>	<i>Explanation</i>
F -	Repairable item. When uneconomical- ly repairable, condemn and dispose at the direct support level.
H -	Repairable item. When uneconomical-ly repairable, condemn and dispose at the general support level.
D -	Repairable item. When beyond lower level repair capability, return to depot. Condemnation and disposal not authorized below depot level.
L -	Repairable item. Repair, condemna-tion, and disposal not authorized below depot/Specialized Repair Ac-tivity level.
A -	Item requires special handling or con-demnation procedures because of specific reasons (i.e., precious metal content, high dollar value, critical material or hazardous ma-terial).

b. Federal Stock Number. Indicates the Federal stock number assigned to the item and will be used for requisitioning purposes.

c. Description. Indicates the Federal item name and a minimum description required to identify the item. The last line indicates the reference number followed by the applic-able Federal Supply Code for Manufactur-er (FSCM) in parentheses. The FSCM is used as an element in item identification to designate manufacturer or distributor or Government agency, etc., and is identi-fied in SB 708-42.

d. Unit of Measure (U/M). Indicates the standard or basic quantity by which the listed item is used in performing the actual maintenance function. This measure is ex-pressed by a two-character alphabetical ab-бреviation; e.g., ea, in, pr, etc., and is the basis used to indicate quantities and allow-ances in subsequent columns. When the unit of measure differs from the unit of is-sue, the lowest unit of issue that will sat-ify the required units of measure will be requisitioned.

e. Quantity Incorporated in Unit. This column indicates the quantity of the item used in the equipment. Subsequent appear-ances of the same item in the same assem-bly are indicated by the letters "REF".

f. 15-Day Organizational Maintenance Allowance.

(1) The repair parts indicated by an asterisk in the allowance column represent those authorized for use at the organiza-

tional category, and will be requisitioned on an 'as required' basis, until stockage is based on demand in accordance with AR 710-2.

(2) Major Army commanders are au-thorized to approve reduction in the range of support items authorized for use in units within their commands. Recommenda-tions for increase in range of items au-thorized for use will be forwarded to Com-mander, US Army Electronics Command, ATTN: AMSEL-MA-CR, Fort Monmouth, NJ., 07703. Any changes approved will be reflected in a revision to the RPSTL.

(3) Allowance quantities are indicated in the special tools list section for special tools, TMDE, and other equipment.

g. Illustration. This column is divided as follows :

(1) *Figure number.* Indicates the fig-ure number of the illustration on which the item is shown in TM 11-5054.

(2) *Item number.* Indicates the item number or reference designation used to reference the item in the illustration.

1-4. Special Information

a. Usable on codes are included in col-umn 3. Uncoded items are applicable to all models. Identification of the usable on codes used in this publication are -

<i>Code</i>	<i>Used on</i>
A4A	BC-614-E
A4B	BC-614-H
A4C	BC-614-I

b. The following publication pertains to the equipment and its components:

TM 11-5054	Speech Amplifier BC-614-E, -F, -H, and -I.
------------	--

1-5. Location of Repair Parts

a. This manual contains one cross-ref-erence index (sec V) to be used to locate a repair part when either the Federal stock number or reference number (manufac-turer's part number) is known. The first column in the index is prepared in numer-ical or alphanumeric sequence in ascend-ing order. The reference numbers (manu-facturer's part numbers) are listed immedi-ately following the last listed Federal stock number in the index of Federal stock numbers.

b. When the Federal stock number or reference number is known, follow the pro-

cedures given in (1) and (2) below.

(1) Refer to the index of Federal stock numbers (sec V) and locate the Federal stock number or reference number. The FSN and reference number are cross-referenced to the applicable figure and item number or reference designation.

(2) Refer to the repair parts list (sec III) and locate the figure number (col 7a) and item number or reference designation (col 7b) as noted in the FSN index.

c. When the figure and item number or reference designation are known, scrutinize columns 7a and 7b of the repair parts list (sec III) until the item is located.

d. When the FSN, reference number, figure number, item number and reference

designation are not known, scrutinize column 3 of the repair parts list (sec III), which is arranged in alphabetical order.

1-6. Abbreviations

Not applicable.

1-7. Reporting of Equipment

ion

Improvements

The reporting of errors, omissions, and recommendations for improving this publication by the individual user is encouraged. Reports should be submitted on DA Form 2028 (Recommended Changes to Publications) and forwarded direct to Commander, US Army Electronics Command, ATTN: AMSEL-MA-CR, **Fort Monmouth, NJ., 07703.**

(Next printed page is 6)

SECTION III

T M 1 1 - 5 8 2 0 - 4 3 0 - 2 0 P

(1) SMR CODE	(2) FEDERAL STOCK NUMBER	(3) DESCRIPTION REFERENCE NUMBER & MFR CODE USABLE ON CODE	(4) UNIT OF MEAS	(5) QTY. INC IN UNIT	(6) 15-DAY ORGANIZATIONAL MAINTENANCE ALW				(7) ILLUSTRATION	
					(a)	(b)	(c)	(d)	(a)	(b)
					1-5	6-20	21-50	51-100	FIGURE NO.	ITEM NO.
PAQZZ	5960-228-3765	ELECTRON TUBE V102..... 6J5HGT (81349)	EA	2	*	*	*	*	5	V102
PAUZZ	5960-228-3765	ELECTRON TUBE V108..... 6J5HGT (81349)	EA	REF	*	*	*	*	5	V108
PAQZZ	5960-188-3577	ELECTRON TUBE V103..... 6SN7HGT (81349)	EA	3	*	*	*	*	5	V103
PAQZZ	5960-188-3577	ELECTRON TUBE V104..... 6SN7HGT (81349)	EA	REF	*	*	*	*	5	V104
PAQZZ	5960-188-3577	ELECTRON TUBE V106..... 6SN7HGT (81349)	EA	REF	*	*	*	*	5	V106
PAQZZ	5960-100-5273	ELECTRON TUBE V101..... 6SQ7 (81350)	EA	1	*	*	*	*	5	V101
PAUZZ	5960-100-5274	ELECTRON TUBE V105..... 6SR7 (81350)	EA	1	*	*	*	*	5	V105
PAQZZ	5960-100-7320	ELECTRON TUBE V107..... 80 (81349)	EA	1	*	*	*	*	5	V107
PAUZZ	6240-057-2887	LAMP, INCANDESCENT LM-27 E106..... LM27 (80058)	EA	1	*	*	*	*		E106
PAUZZ	6210-299-2916	LENS, INDICATOR LIGHT NO-REF-DESIG RED GLASS . 1/2 IN DIA 1 1/16 IN LG X 5/8 IN DIA O/A 81-431 (72619)	EA	1	*	*	*	*		
PCQZZ	5340-473-8107	MOUNT, SHOCK A101 2-3/8 IN X 2-3/8 IN RUBBER.. COMPOUND CUSHION WITH 1-1/2 IN DIA CTR SLEEVE 153PH24 (76005) A48,A4C	EA	4	*	*	*	*		A101
PCUZZ	5340-473-8107	MOUNT, SHOCK A102 2-3/8 IN X 2-3/8 IN RUBBER.. COMPOUND CUSHION WITH 1-1/2 IN DIA CTR SLEEVE 153PH24 (76005) A48,A4C	EA	REF	*	*	*	*		A102
PCUZZ	5340-473-8107	MOUNT, SHOCK A103 2-3/8 IN X 2-3/8 IN RUBBER.. COMPOUND CUSHION WITH 1-1/2 IN DIA CTR SLEEVE 153PH24 (76005) A48,A4C	EA	REF	*	*	*	*		A103
PCQZZ	5340-473-8107	MOUNT, SHOCK A104 2-3/8 IN X 2-3/8 IN RUBBER.. COMPOUND CUSHION WITH 1-1/2 IN DIA CTR SLEEVE 153PH24 (76005) A48,A4C	EA	REF	*	*	*	*		A104

SECTION V

TM11-5820-430-20P

INDEX - FEDERAL STOCK NUMBER AND REFERENCE NUMBER
CROSS-REFERENCE TO FIGURE AND ITEM NUMBER

STOCK NUMBER	FIGURE NO.	ITEM	STOCK NUMBER		
5340-473-8107		A101	5960-188-3577	5	V103
5340-473-8107		A102	5960-188-3577	5	V104
5340-473-8107		A103	5960-188-3577	5	V106
5340-473-8107		A104	5960-228-3765	5	V102
5960-100-5273	5	V101	5960-228-3765	5	V108
5960-100-5274	5	V105	6210-299-2916		
5960-100-7320	5	V107	6240-057-2887		E106

REFERENCE NO.	MFR CODE	FIG. NO.	ITEM NO.	REFERENCE NO.	MFR CODE	FIG. NO.	ITEM NO.
LM274	80058		E106	6SN7WGT	81349	5	V103
153PH24	76005		A101	6SN7WGT	81349	5	V104
153PM24	76005		A102	6SN7WGT	81349	5	V106
153PH24	76005		A103	6SQ7	81350	5	V101
153PH24	76005		A104	6SR7	81350	5	V105
6J5EFT	81349	5	V102	81349	81349	5	V107
6J5WGT	81349	5	V108	81-431	72619		

By *[Signature]* Secretary of the Army:

[Signature] W. ABRAMS
General, United States Army
Chief of Staff

Official:

VERNE L. BOWERS
Major General, United States Army
The Adjutant General

Distribution:

To be distributed in accordance with DA Form 12-51 (qty rqr block no. 738),
Organizational maintenance requirements for BC-614.

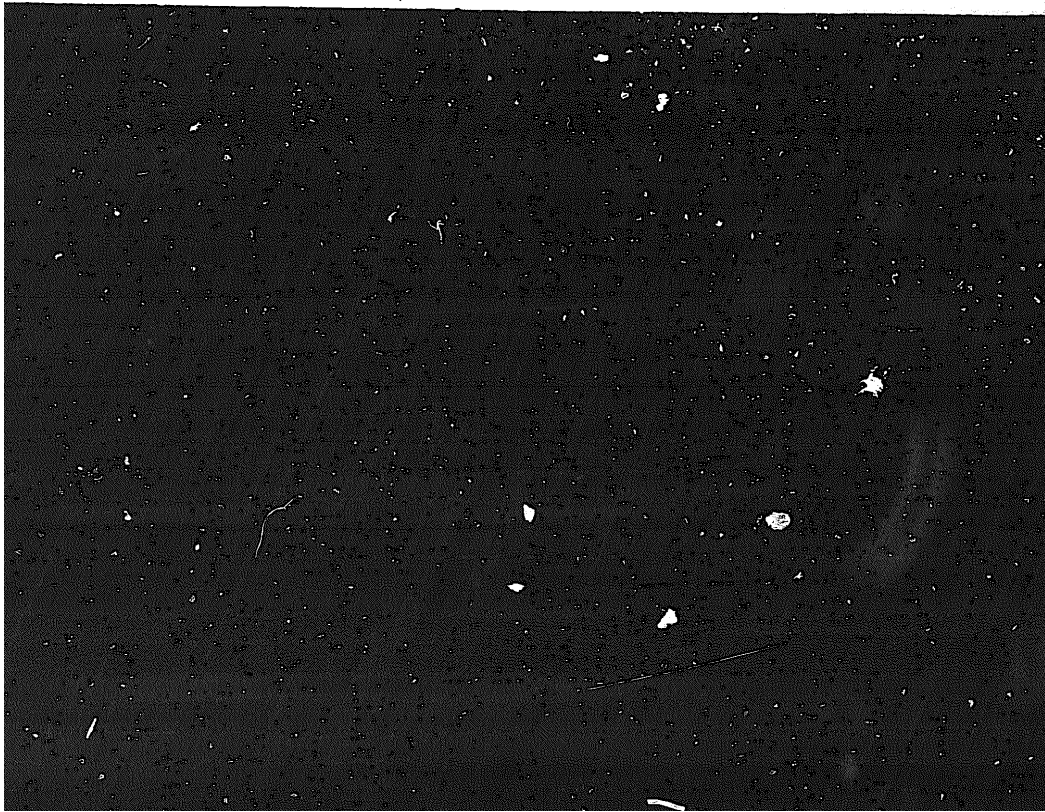
★ U.S. GOVERNMENT PRINTING OFFICE: 1974-768115/1143

END

11-26-82

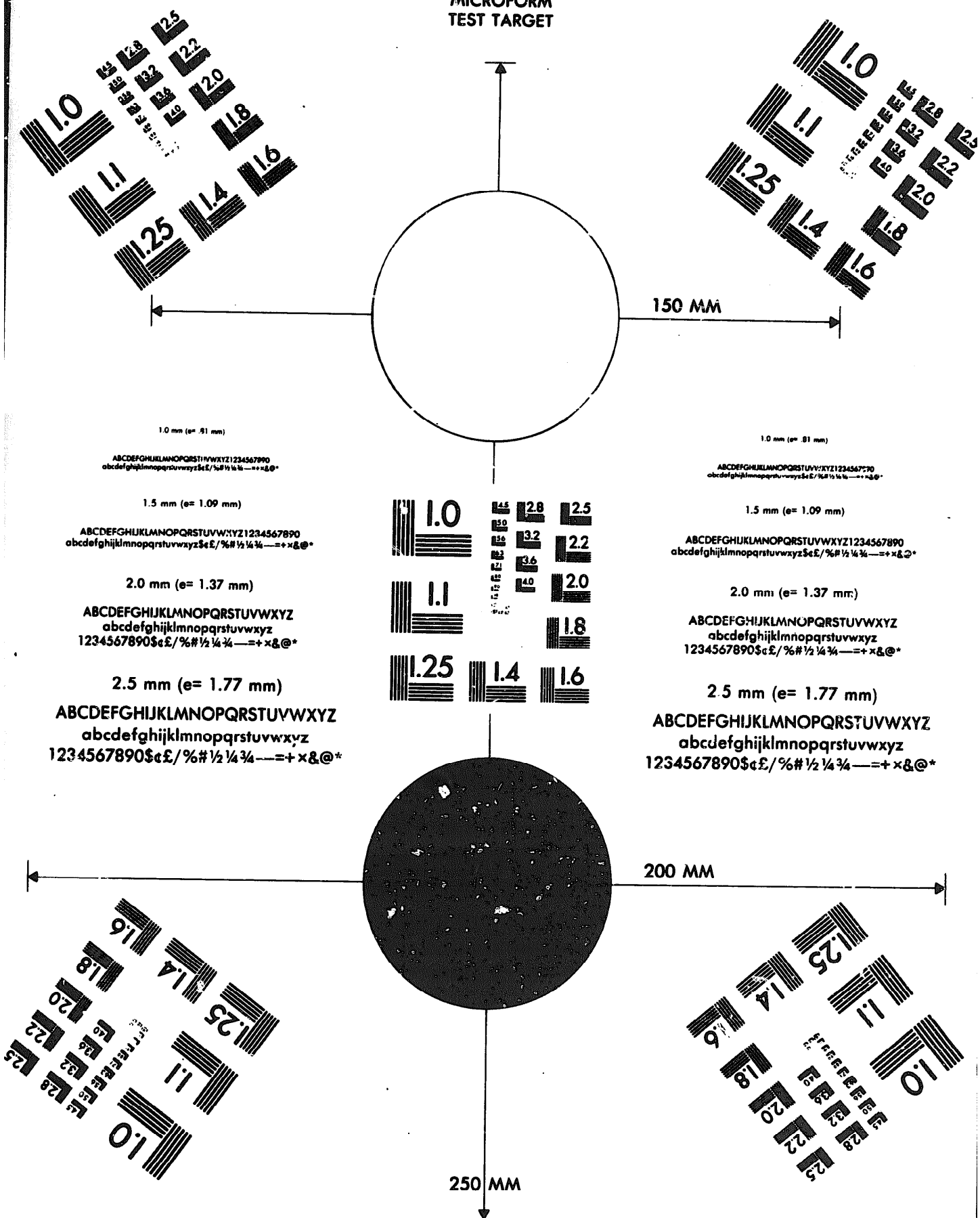
DATE





DEPARTMENT OF THE ARMY

MICROFORM
TEST TARGET



1.0 mm (e= .81 mm)

ABCDEFGHIJKLMNQRSTU VWXYZ1234567890
abcdefghijklmnopqrstuvwxyz\$%&/'%# 1/2 1/4 3/4 —=+ x&@*

1.5 mm (e= 1.09 mm)

ABCDEFGHIJKLMNQRSTU VWXYZ1234567890
abcdefghijklmnopqrstuvwxyz\$%&/'%# 1/2 1/4 3/4 —=+ x&@*

2.0 mm (e= 1.37 mm)

ABCDEFGHIJKLMNQRSTU VWXYZ
abcdefghijklmnopqrstuvwxyz
1234567890\$%&/'%# 1/2 1/4 3/4 —=+ x&@*

2.5 mm (e= 1.77 mm)

ABCDEFGHIJKLMNQRSTU VWXYZ
abcdefghijklmnopqrstuvwxyz
1234567890\$%&/'%# 1/2 1/4 3/4 —=+ x&@*

1.0 mm (e= .81 mm)

ABCDEFGHIJKLMNQRSTU VWXYZ1234567890
abcdefghijklmnopqrstuvwxyz\$%&/'%# 1/2 1/4 3/4 —=+ x&@*

1.5 mm (e= 1.09 mm)

ABCDEFGHIJKLMNQRSTU VWXYZ1234567890
abcdefghijklmnopqrstuvwxyz\$%&/'%# 1/2 1/4 3/4 —=+ x&@*

2.0 mm (e= 1.37 mm)

ABCDEFGHIJKLMNQRSTU VWXYZ
abcdefghijklmnopqrstuvwxyz
1234567890\$%&/'%# 1/2 1/4 3/4 —=+ x&@*

2.5 mm (e= 1.77 mm)

ABCDEFGHIJKLMNQRSTU VWXYZ
abcdefghijklmnopqrstuvwxyz
1234567890\$%&/'%# 1/2 1/4 3/4 —=+ x&@*

150 MM

200 MM

250 MM